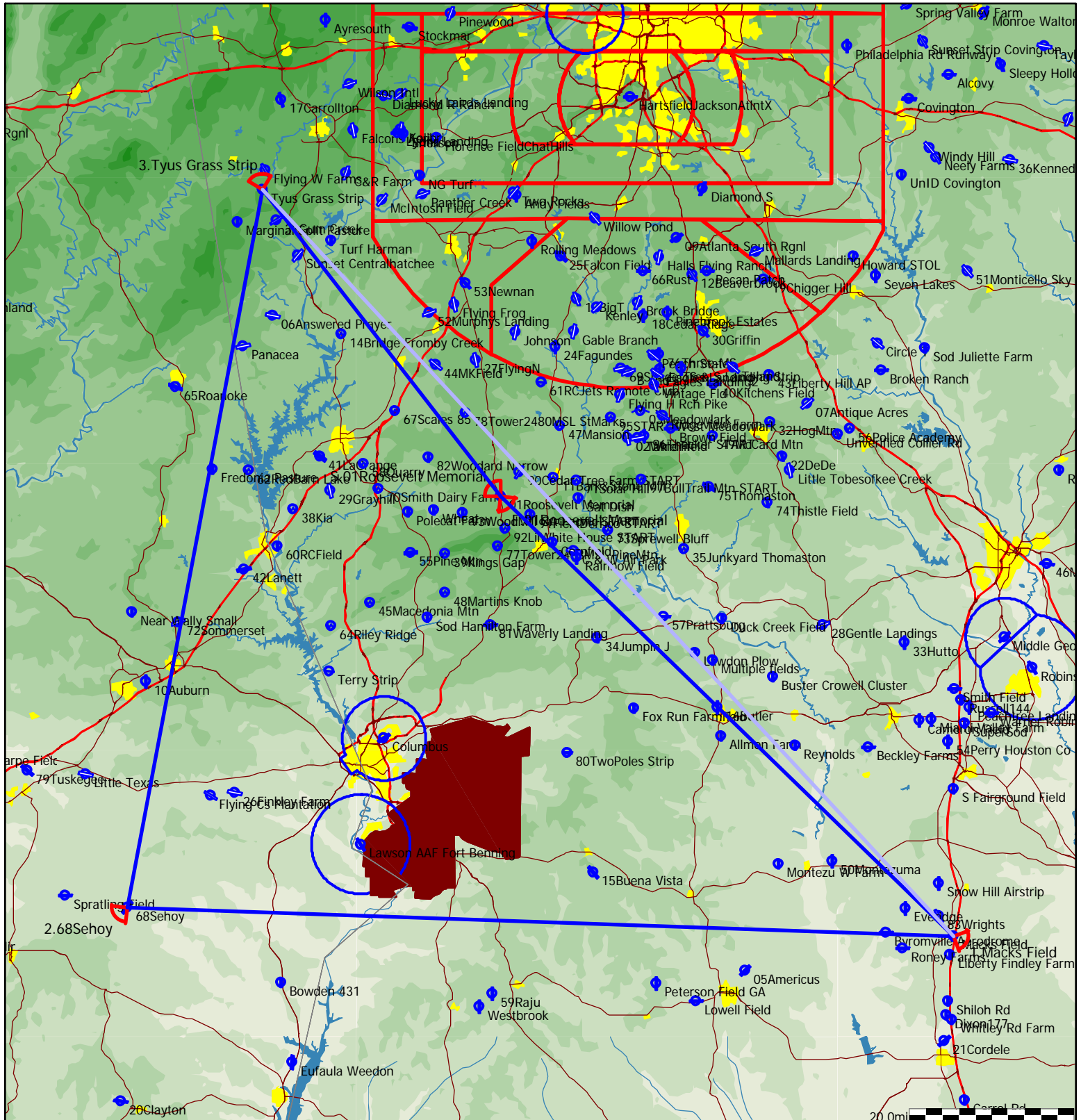


Type: FAI Triangle, Start on leg - (500.5km) [501.1pts]

Warm Springs 500km Triangles

Task distance: 311.3mi

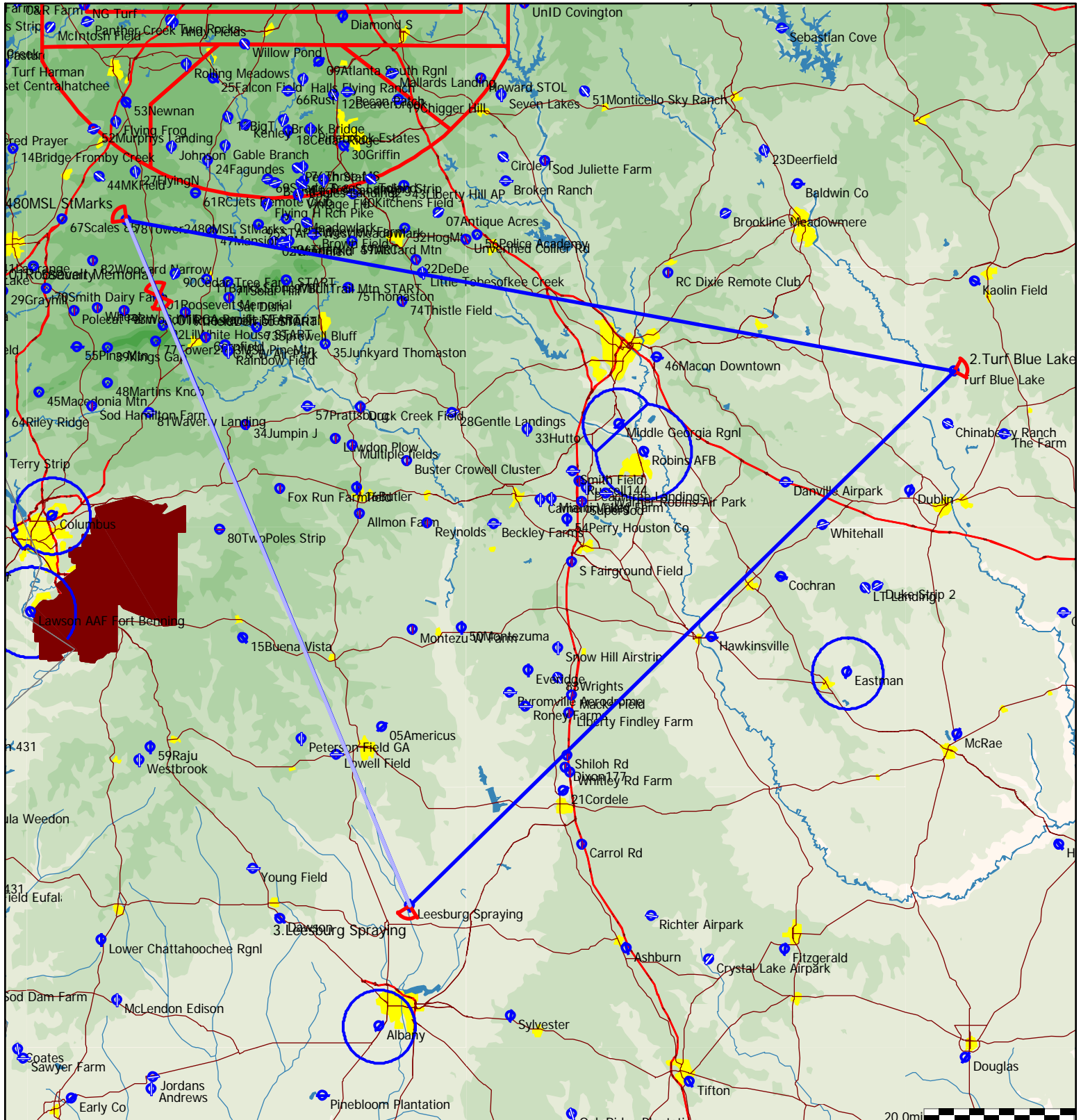
Style	Code	Points	Latitude	Longitude	Dis.	Crs.
Take off	01Rosevl	01Roosevelt Memorial	N32°56'19"	W084°41'47"		
Start	01Rosevl	01Roosevelt Memorial	N32°56'19"	W084°41'47"		
1.Point	MACKS	Macks Field	N32°10'17"	W083°45'21"	76.2mi	134°
2.Point	68Sehoy	68Sehoy	N32°13'17"	W085°28'18"	100.6mi	272°
3.Point	TYUS	Tyus Grass Strip	N33°28'26"	W085°11'27"	87.8mi	11°
Finish	01Rosevl	01Roosevelt Memorial	N32°56'19"	W084°41'47"	46.7mi	142°
Landing	01Rosevl	01Roosevelt Memorial	N32°56'19"	W084°41'47"		



Type: FAI Triangle, Start on leg - (500.6km) [500.6pts]

Task distance: 311.0mi

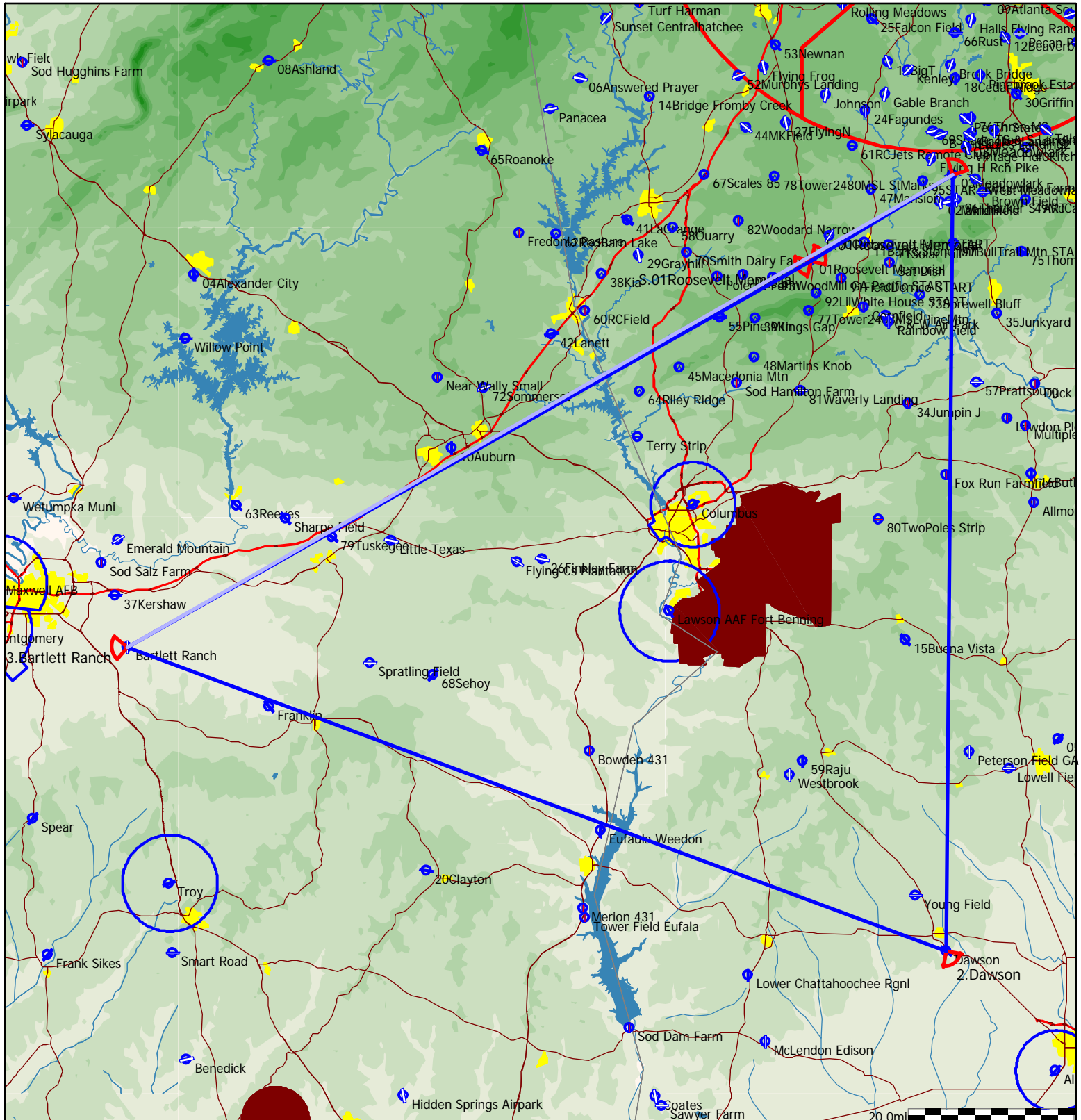
Style	Code	Points	Latitude	Longitude	Dis.	Crs.
Take off	01Rosevl	01Roosevelt Memorial	N32°56'19"	W084°41'47"		
Start	01Rosevl	01Roosevelt Memorial	N32°56'19"	W084°41'47"		
1.Point	78Tw2480	78Tower2480MSL StMarks	N33°05'05"	W084°46'13"	10.9mi	337°
2.Point	TurfBI	Turf Blue Lake	N32°47'43"	W082°53'04"	111.4mi	100°
3.Point	Leesburg	Leesburg Spraying	N31°46'05"	W084°07'32"	101.4mi	226°
Finish	01Rosevl	01Roosevelt Memorial	N32°56'19"	W084°41'47"	87.3mi	338°
Landing	01Rosevl	01Roosevelt Memorial	N32°56'19"	W084°41'47"		



Type: FAI Triangle, Start on leg - (501.0km) [501.0pts]

Task distance: 311.3mi

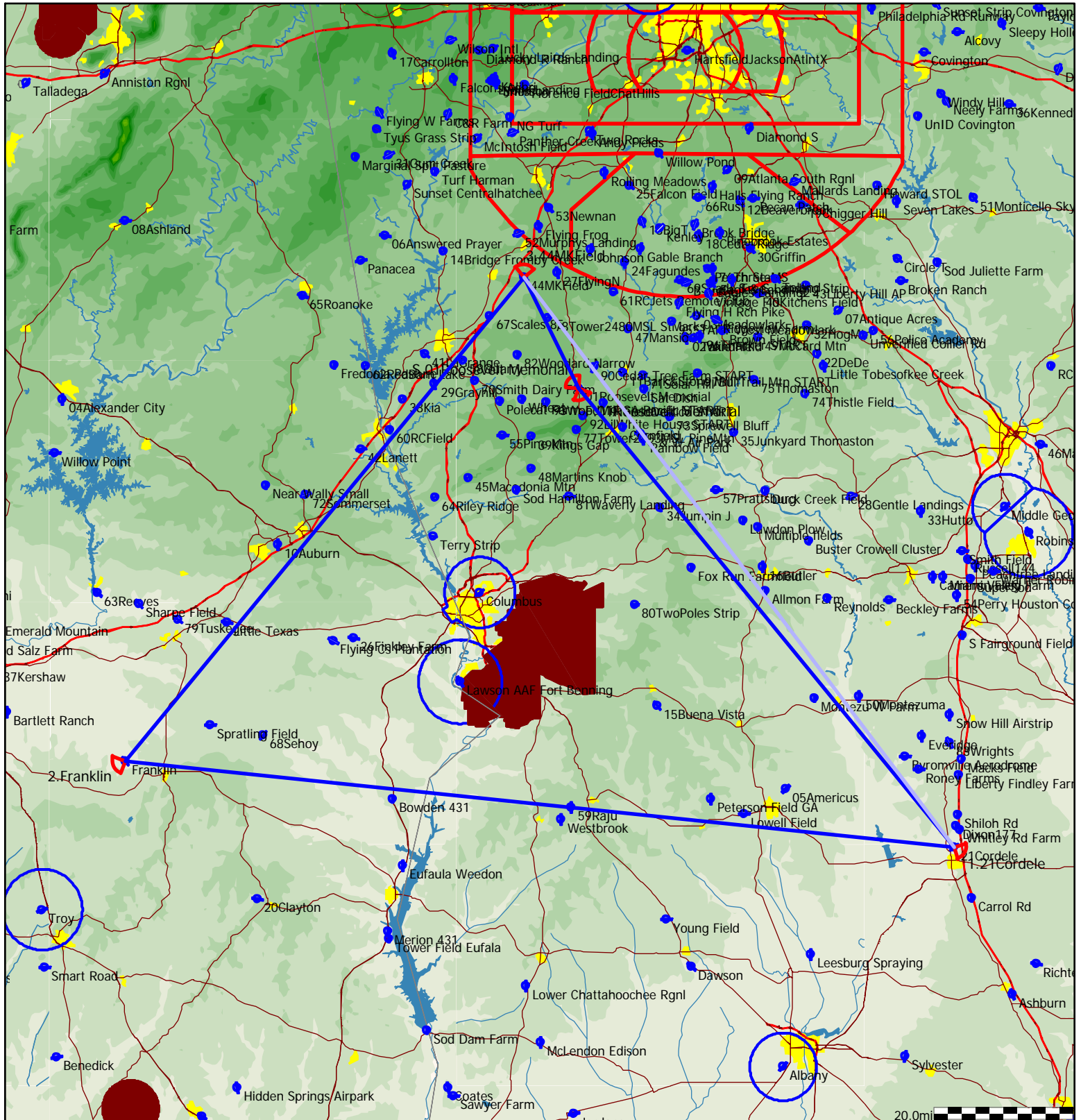
Style	Code	Points	Latitude	Longitude	Dis.	Crs.
Take off	01Rosevl	01Roosevelt Memorial	N32°56'19"	W084°41'47"		
Start	01Rosevl	01Roosevelt Memorial	N32°56'19"	W084°41'47"		
1.Point	03Meadol	03Meadowlark	N33°05'14"	W084°24'19"	19.8mi	59°
2.Point	DawsnF	Dawson	N31°44'36"	W084°25'09"	92.6mi	181°
3.Point	Bartlett	Bartlett Ranch	N32°16'11"	W086°05'56"	105.1mi	291°
Finish	01Rosevl	01Roosevelt Memorial	N32°56'19"	W084°41'47"	93.9mi	60°
Landing	01Rosevl	01Roosevelt Memorial	N32°56'19"	W084°41'47"		



Type: FAI Triangle, Start on leg - (501.5km) [502.2pts]

Task distance: 312.1mi Alternate remote start at Cedar Tree is more efficient if speed is a concern

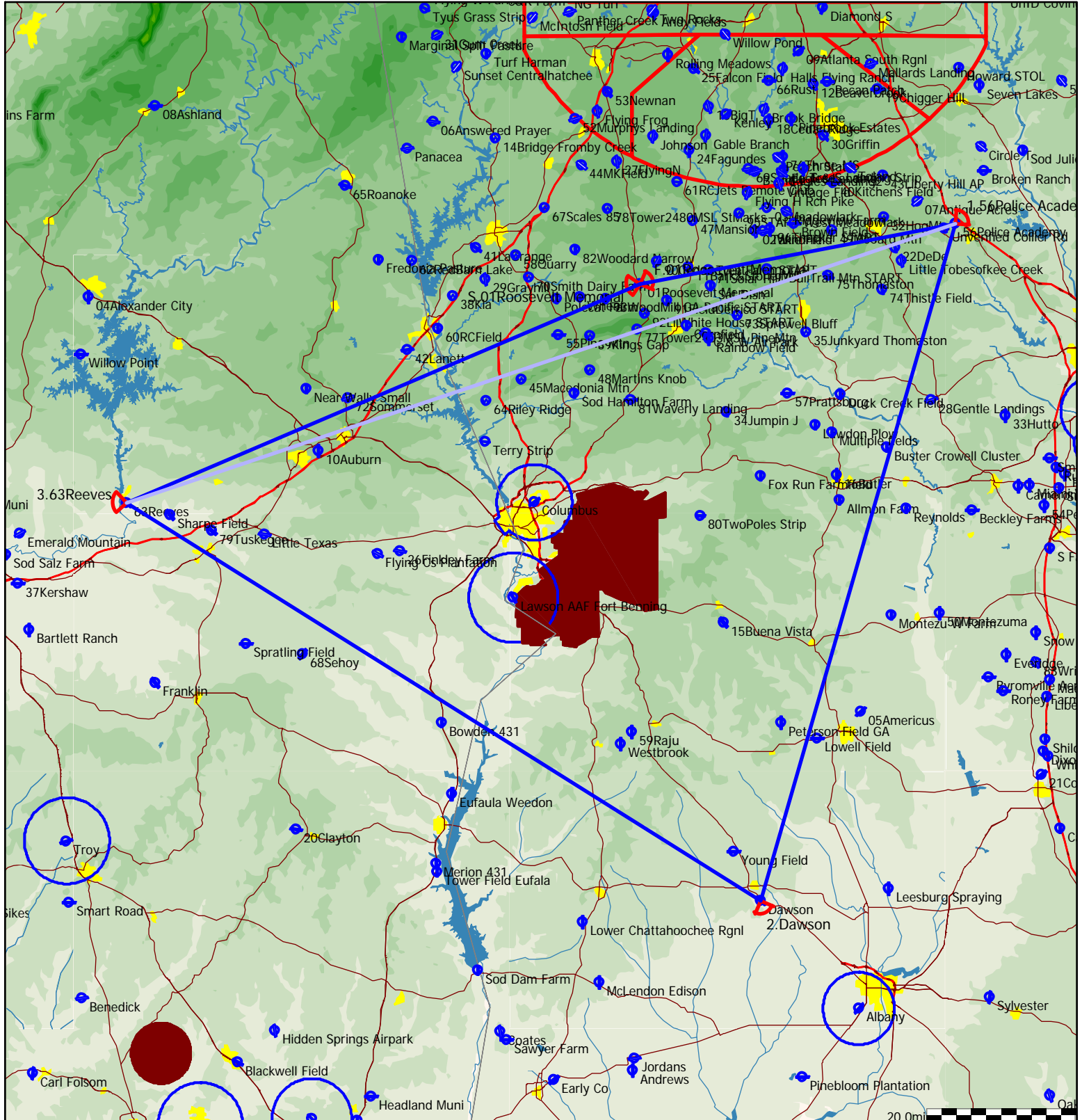
Style	Code	Points	Latitude	Longitude	Dis.	Crs.
Take off	01Rosevl	01Roosevelt Memorial	N32°56'19"	W084°41'47"		
Start	01Rosevl	01Roosevelt Memorial	N32°56'19"	W084°41'47"		
1.Point	21Cordel	21Cordele	N31°59'20"	W083°46'26"	84.8mi	140°
2.Point	Franklin	Franklin	N32°10'01"	W085°48'35"	120.1mi	276°
3.Point	44MKFeld	44MKField	N33°10'07"	W084°49'49"	89.6mi	39°
Finish	01Rosevl	01Roosevelt Memorial	N32°56'19"	W084°41'47"	17.7mi	154°
Landing	01Rosevl	01Roosevelt Memorial	N32°56'19"	W084°41'47"		



Type: FAI Triangle, Start on leg - (501.8km) [502.7pts]

Task distance: 312.4mi Alternate remote start at Little White House is more efficient if speed is a concern

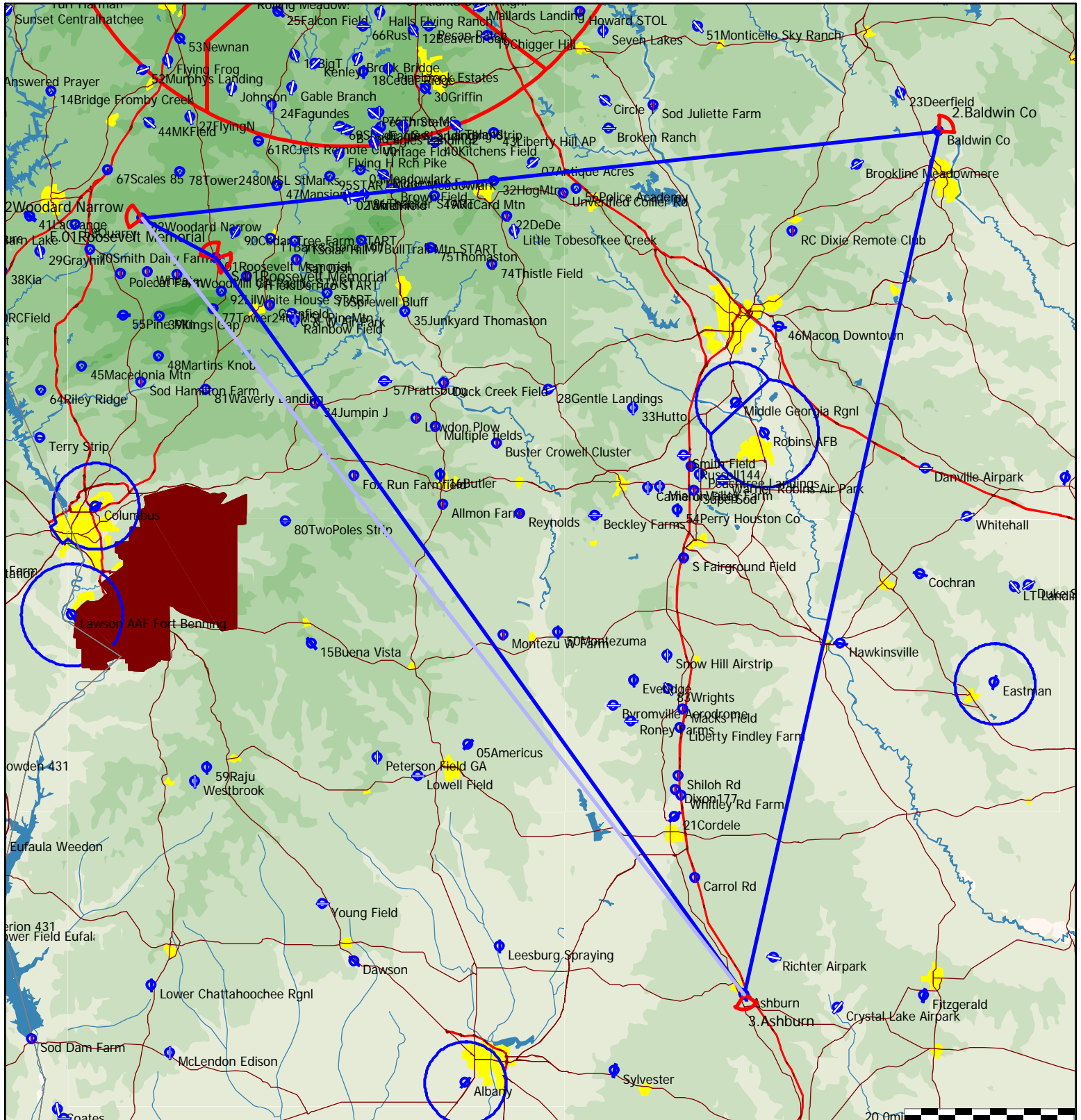
Style	Code	Points	Latitude	Longitude	Dis.	Crs.
Take off	01Rosevl	01Roosevelt Memorial	N32°56'19"	W084°41'47"		
Start	01Rosevl	01Roosevelt Memorial	N32°56'19"	W084°41'47"		
1.Point	56PolicA	56Police Academy	N33°03'25"	W083°58'18"	42.9mi	79°
2.Point	DawsnF	Dawson	N31°44'36"	W084°25'09"	94.2mi	196°
3.Point	62Reves	63Reeves	N32°30'54"	W085°52'34"	100.6mi	302°
Finish	01Rosevl	01Roosevelt Memorial	N32°56'19"	W084°41'47"	74.7mi	67°
Landing	01Rosevl	01Roosevelt Memorial	N32°56'19"	W084°41'47"		



Type: FAI Triangle, Start on leg - (503.4km) [504.8pts]

Task distance: 313.7mi

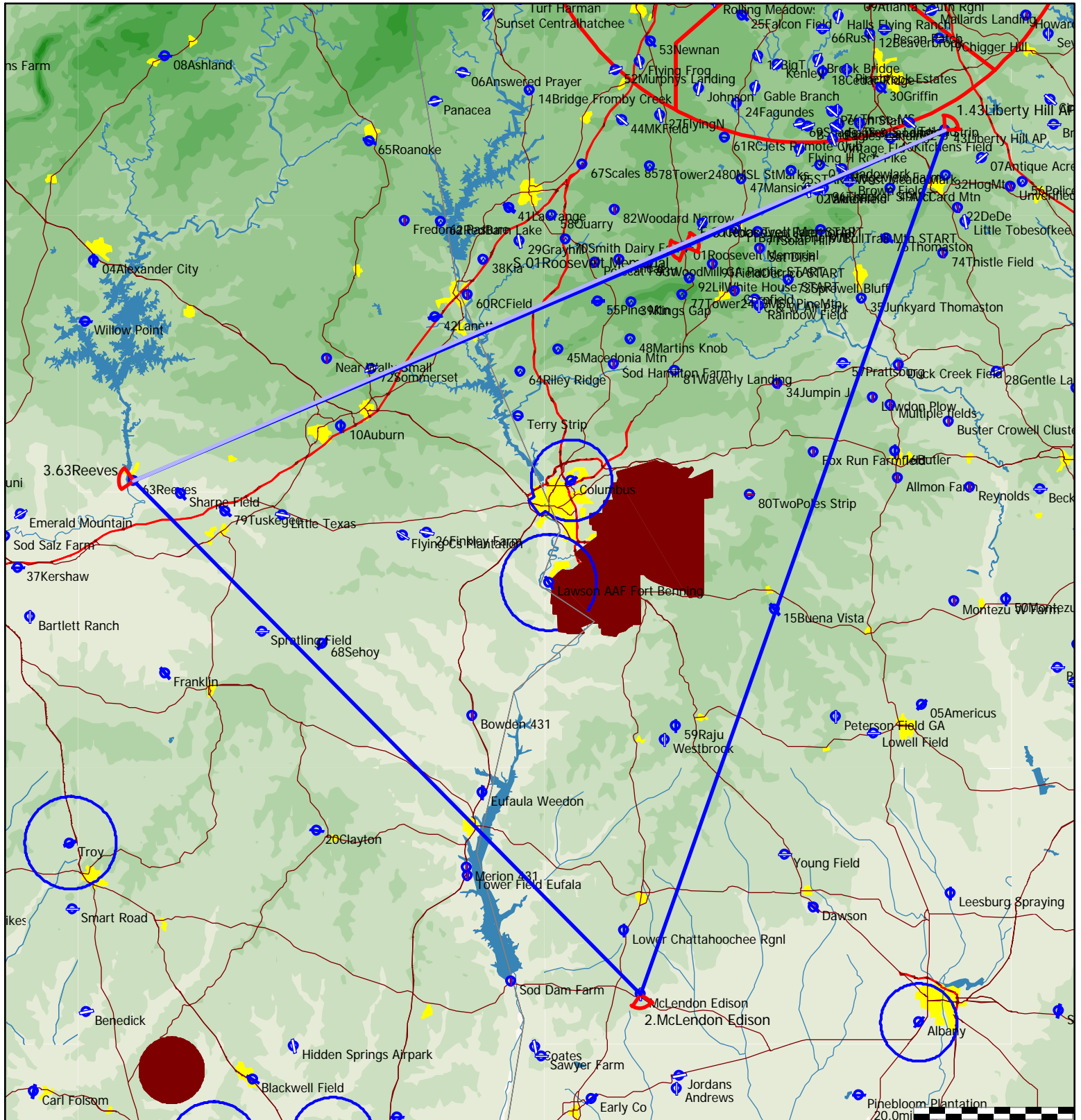
Style	Code	Points	Latitude	Longitude	Dis.	Crs.
Take off	01Rosevl	01Roosevelt Memorial	N32°56'19"	W084°41'47"		
Start	01Rosevl	01Roosevelt Memorial	N32°56'19"	W084°41'47"		
1.Point	82WodNar	82Woodard Narrow	N33°00'24"	W084°50'45"	9.9mi	298°
2.Point	Baldwin	Baldwin Co	N33°09'15"	W083°14'29"	93.6mi	83°
3.Point	Ashburn	Ashburn	N31°41'09"	W083°37'56"	103.7mi	193°
Finish	01Rosevl	01Roosevelt Memorial	N32°56'19"	W084°41'47"	106.4mi	324°
Landing	01Rosevl	01Roosevelt Memorial	N32°56'19"	W084°41'47"		



Type: FAI Triangle, Start on leg - (506.7km) [506.7pts]

Task distance: 314.9mi

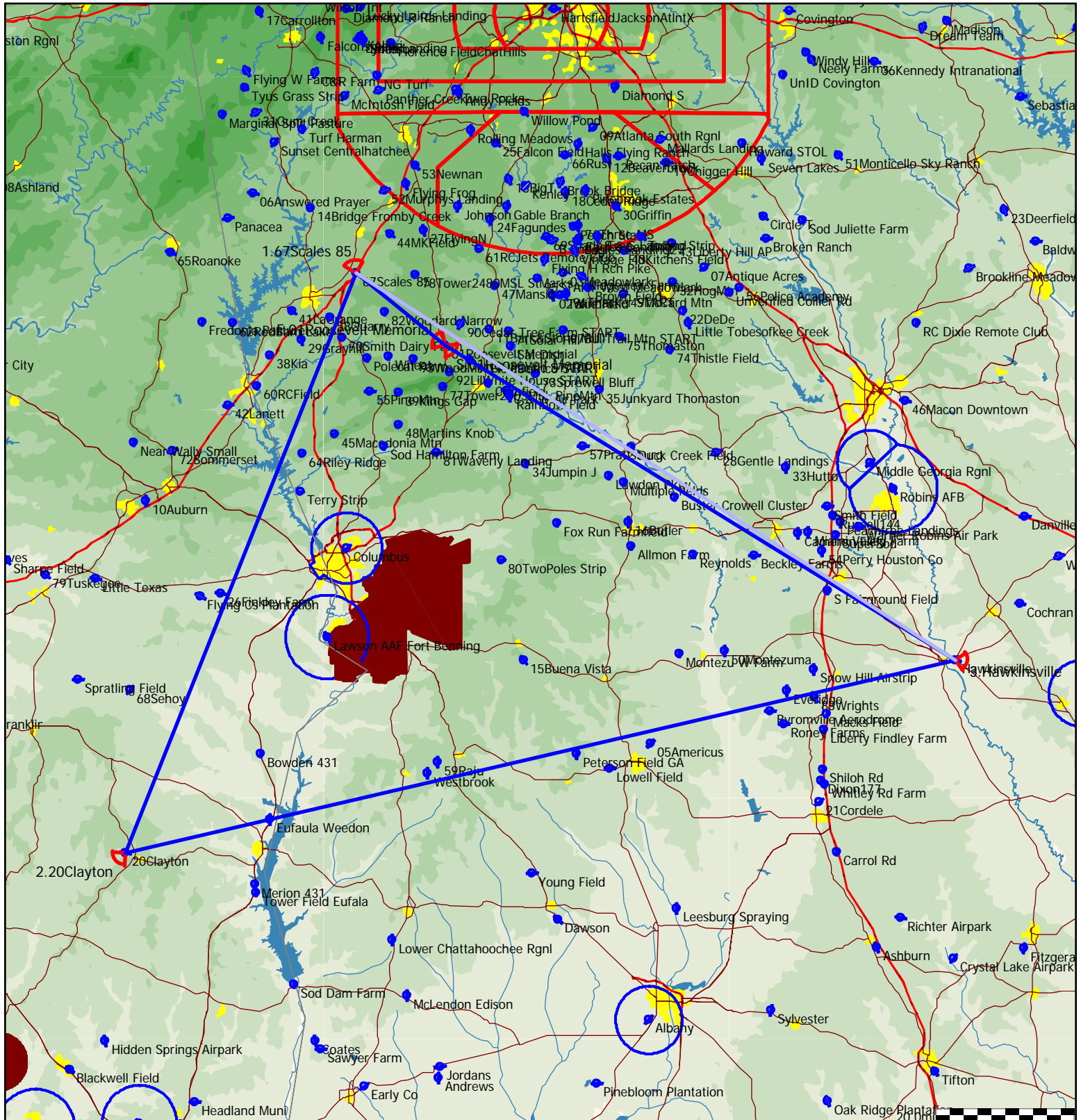
Style	Code	Points	Latitude	Longitude	Dis.	Crs.
Take off	01Rosevl	01Roosevelt Memorial	N32°56'19"	W084°41'47"		
Start	01Rosevl	01Roosevelt Memorial	N32°56'19"	W084°41'47"		
1.Point	43Librth	43Liberty Hill AP	N33°09'01"	W084°08'15"	35.6mi	66°
2.Point	McLendon	McLendon Edison	N31°35'10"	W084°47'26"	114.3mi	200°
3.Point	62Reves	63Reeves	N32°30'54"	W085°52'34"	90.3mi	315°
Finish	01Rosevl	01Roosevelt Memorial	N32°56'19"	W084°41'47"	74.7mi	67°
Landing	01Rosevl	01Roosevelt Memorial	N32°56'19"	W084°41'47"		



Type: FAI Triangle, Start on leg - (506.9km) [507.1pts]

Task distance: 315.1mi

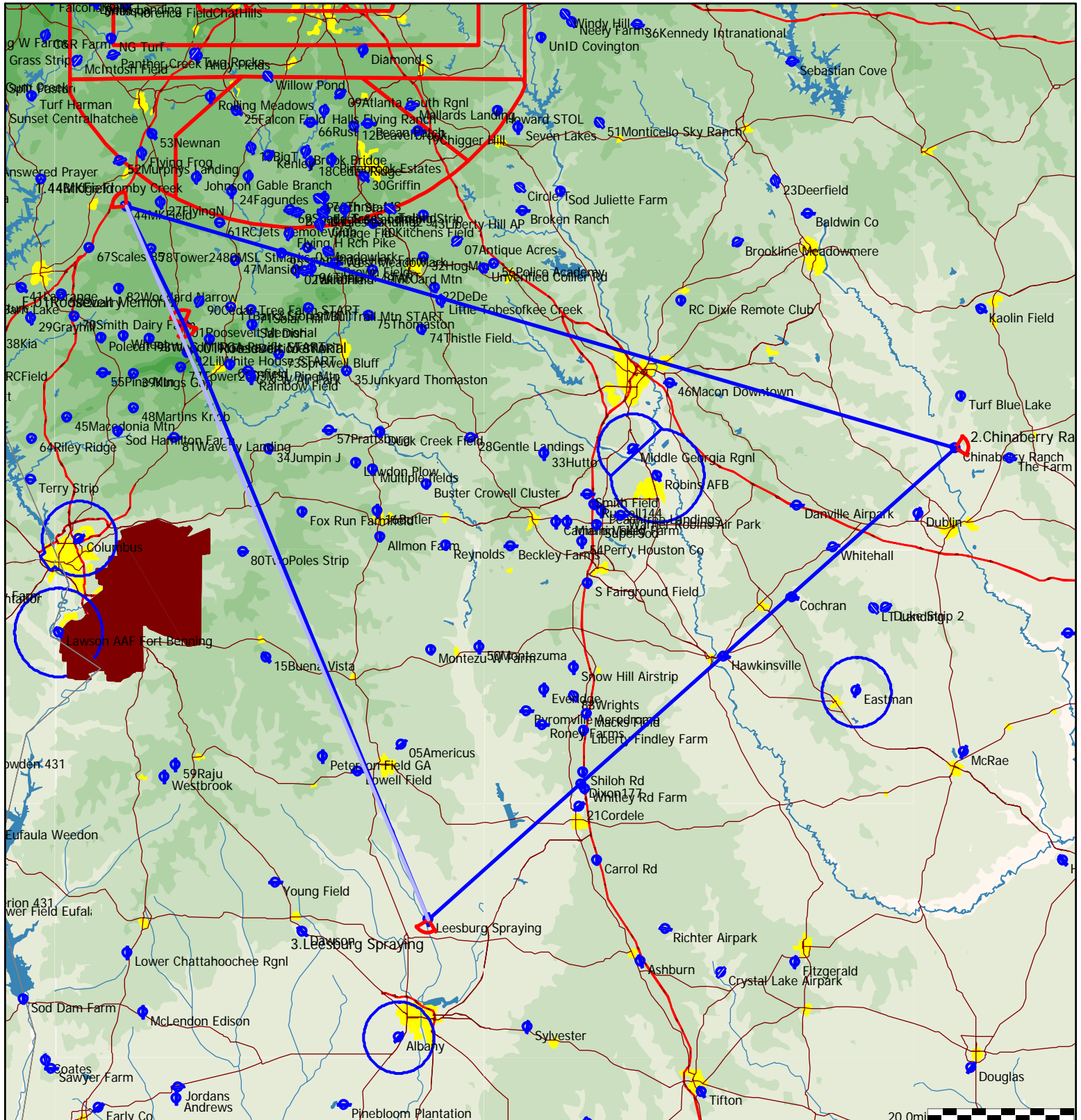
Style	Code	Points	Latitude	Longitude	Dis.	Crs.
Take off	01Rosevl	01Roosevelt Memorial	N32°56'19"	W084°41'47"		
Start	01Rosevl	01Roosevelt Memorial	N32°56'19"	W084°41'47"		
1.Point	67Scales	67Scales 85	N33°05'15"	W084°54'55"	16.3mi	309°
2.Point	20Claytn	20Clayton	N31°53'00"	W085°29'07"	89.4mi	202°
3.Point	Hawkinsv	Hawkinsville	N32°17'01"	W083°26'17"	123.2mi	77°
Finish	01Rosevl	01Roosevelt Memorial	N32°56'19"	W084°41'47"	86.2mi	302°
Landing	01Rosevl	01Roosevelt Memorial	N32°56'19"	W084°41'47"		



Type: FAI Triangle, Start on leg - (511.6km) [511.7pts]

Task distance: 317.9mi

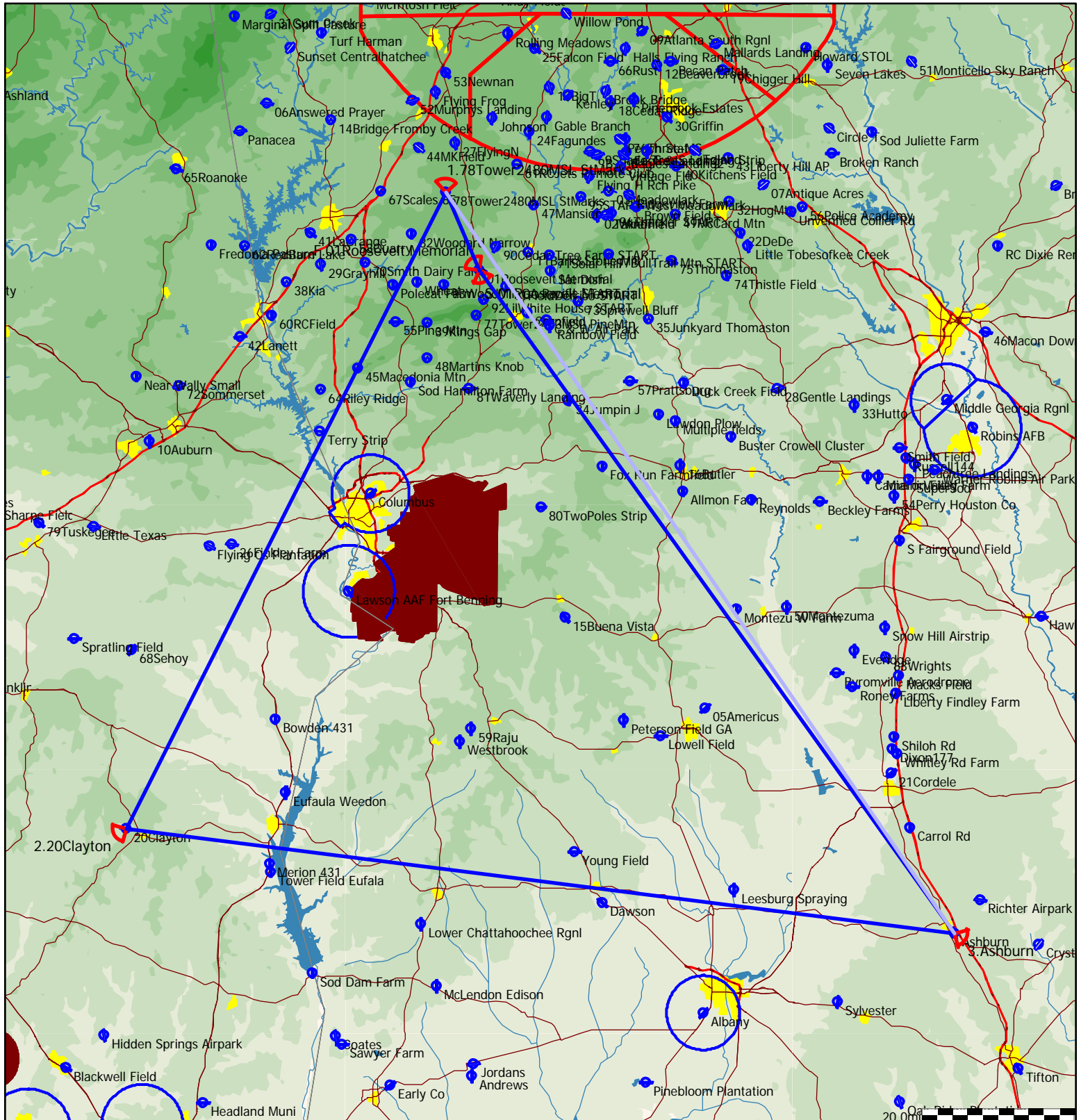
Style	Code	Points	Latitude	Longitude	Dis.	Crs.
Take off	01Rosevl	01Roosevelt Memorial	N32°56'19"	W084°41'47"		
Start	01Rosevl	01Roosevelt Memorial	N32°56'19"	W084°41'47"		
1.Point	44MKFeld	44MKField	N33°10'07"	W084°49'49"	17.7mi	334°
2.Point	Chinabry	Chinaberry Ranch	N32°41'37"	W082°53'56"	116.9mi	106°
3.Point	Leesburg	Leesburg Spraying	N31°46'05"	W084°07'32"	96.1mi	229°
Finish	01Rosevl	01Roosevelt Memorial	N32°56'19"	W084°41'47"	87.3mi	338°
Landing	01Rosevl	01Roosevelt Memorial	N32°56'19"	W084°41'47"		



Type: FAI Triangle, Start on leg - (514.6km) [515.Opts]

Task distance: 320.0mi

Style	Code	Points	Latitude	Longitude	Dis.	Crs.
Take off	01Rosevl	01Roosevelt Memorial	N32°56'19"	W084°41'47"		
Start	01Rosevl	01Roosevelt Memorial	N32°56'19"	W084°41'47"		
1.Point	78Tw2480	78Tower2480MSL StMarks	N33°05'05"	W084°46'13"	10.9mi	337°
2.Point	20Claytn	20Clayton	N31°53'00"	W085°29'07"	92.7mi	207°
3.Point	Ashburn	Ashburn	N31°41'09"	W083°37'56"	109.9mi	97°
Finish	01Rosevl	01Roosevelt Memorial	N32°56'19"	W084°41'47"	106.4mi	324°
Landing	01Rosevl	01Roosevelt Memorial	N32°56'19"	W084°41'47"		

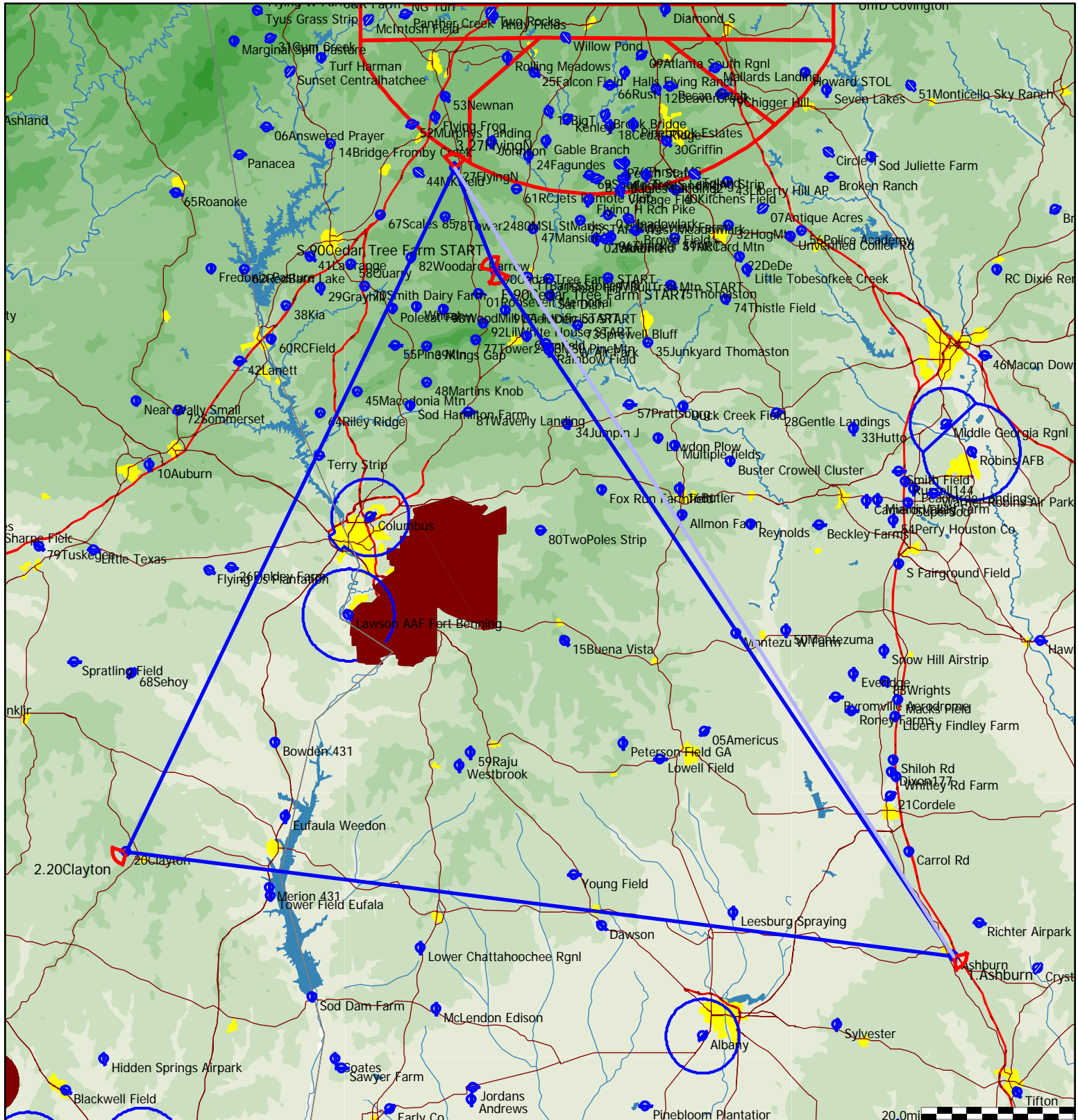


Type: FAI Triangle, Start on leg - (532.1km) [532.6pts]

HC .94=532.0

Task distance: 330.9mi

Style	Code	Points	Latitude	Longitude	Dis.	Crs.
Take off	01Rosevl	01Roosevelt Memorial	N32°56'19"	W084°41'47"		
Start	90CedrST	90Cedar Tree Farm START	N32°58'54"	W084°39'29"		
1.Point	Ashburn	Ashburn	N31°41'09"	W083°37'56"	107.6mi	146°
2.Point	20Claytn	20Clayton	N31°53'00"	W085°29'07"	109.9mi	278°
3.Point	27FlyngN	27FlyingN	N33°10'38"	W084°44'55"	99.0mi	26°
Finish	90CedrST	90Cedar Tree Farm START	N32°58'54"	W084°39'29"	14.5mi	159°
Landing	01Rosevl	01Roosevelt Memorial	N32°56'19"	W084°41'47"		

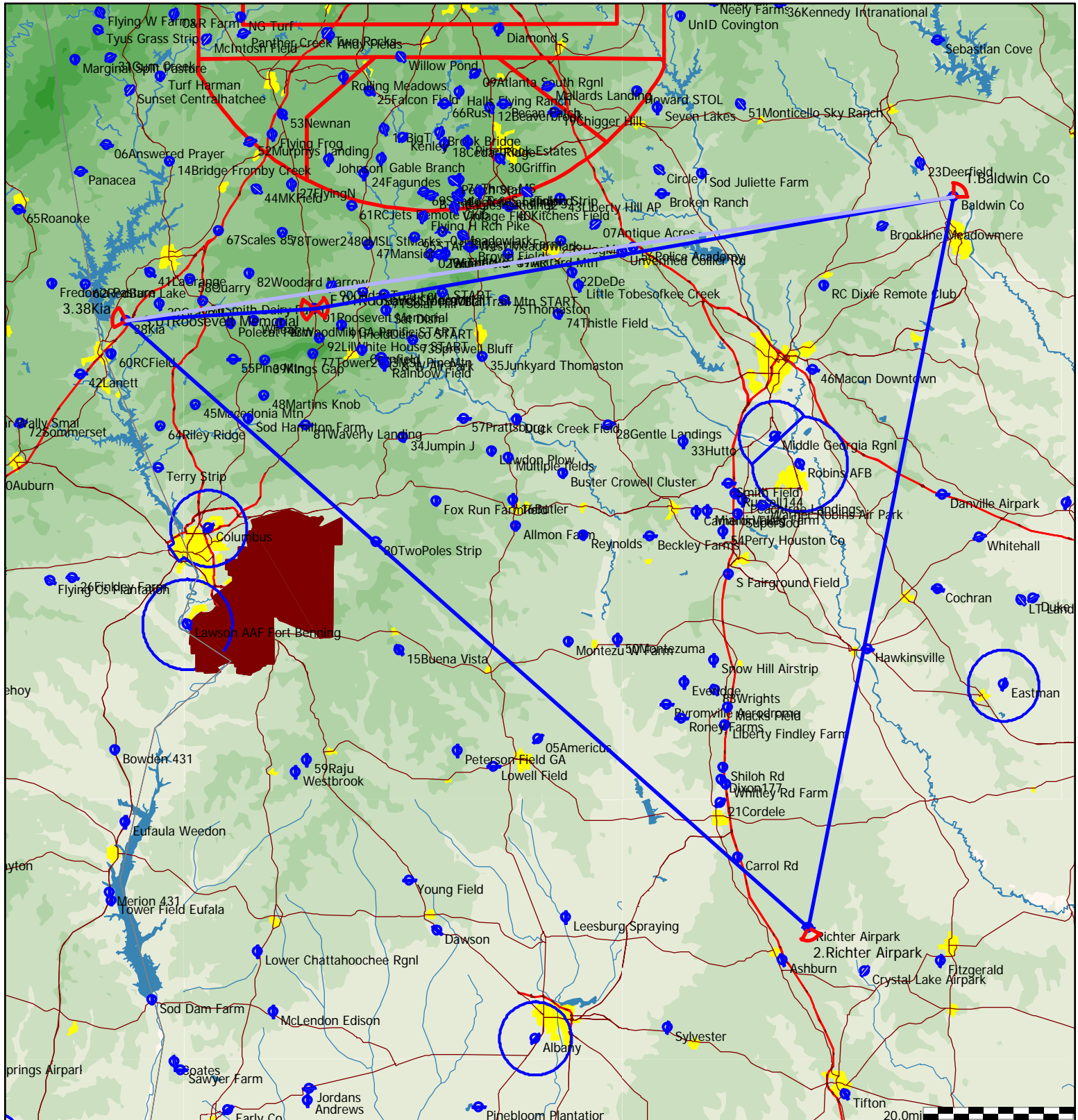


Type: FAI Triangle, Start on leg - (532.4km) [532.6pts]

Task distance: 331.0mi

Alternate remote start at Cedar Tree is more efficient if speed is a concern

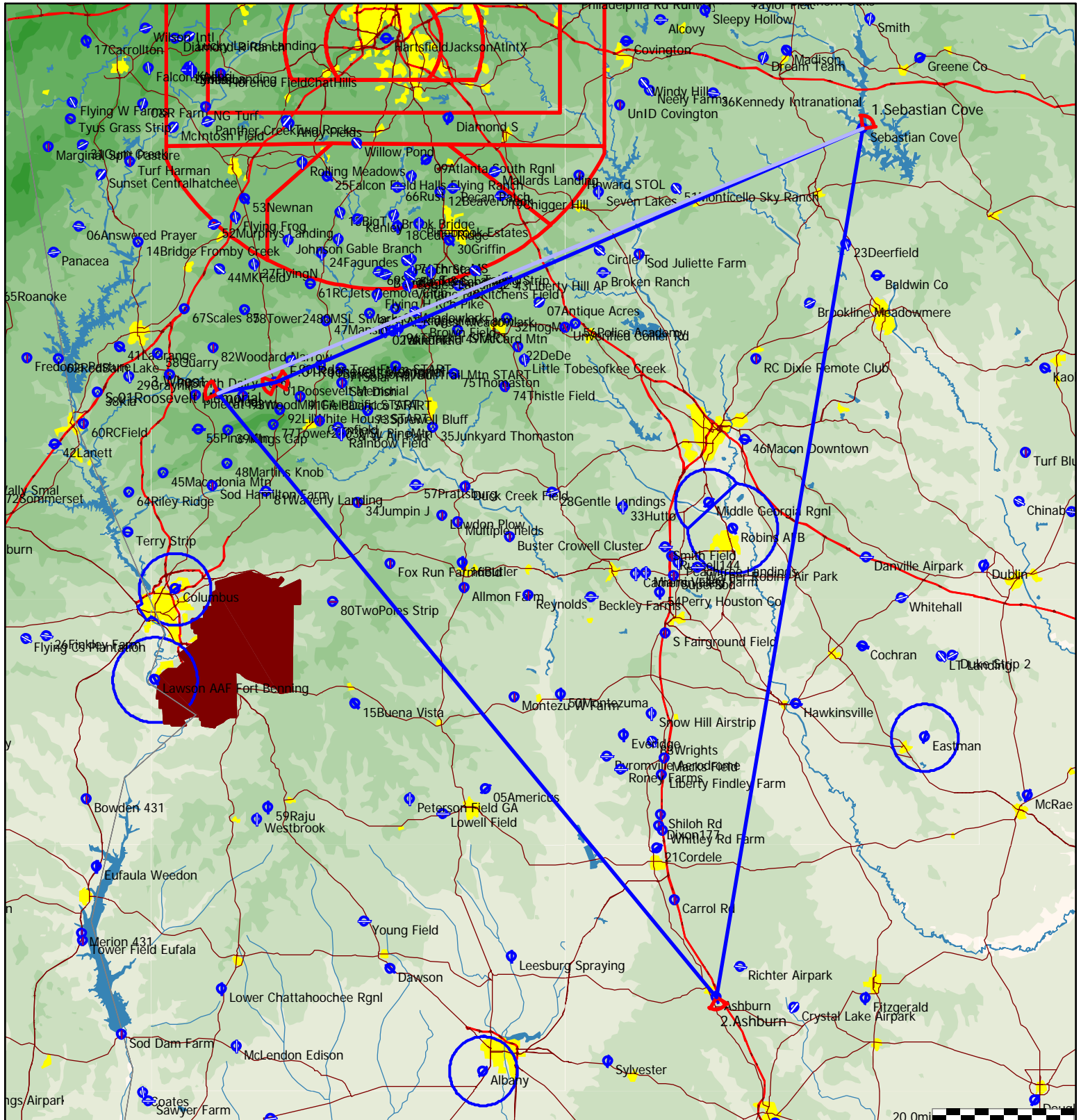
Style	Code	Points	Latitude	Longitude	Dis.	Crs.
Take off	01Rosevl	01Roosevelt Memorial	N32°56'19"	W084°41'47"		
Start	01Rosevl	01Roosevelt Memorial	N32°56'19"	W084°41'47"		
1.Point	Baldwin	Baldwin Co	N33°09'15"	W083°14'29"	85.7mi	80°
2.Point	Richter	Richter Airpark	N31°44'55"	W083°34'25"	98.8mi	191°
3.Point	38Kia	38Kia	N32°54'59"	W085°07'37"	121.4mi	312°
Finish	01Rosevl	01Roosevelt Memorial	N32°56'19"	W084°41'47"	25.1mi	86°
Landing	01Rosevl	01Roosevelt Memorial	N32°56'19"	W084°41'47"		



Type: FAI Triangle, Start on leg - (533.2km) [533.5pts]

Task distance: 331.5mi

Style	Code	Points	Latitude	Longitude	Dis.	Crs.
Take off	01Rosevl	01Roosevelt Memorial	N32°56'19"	W084°41'47"		
Start	01Rosevl	01Roosevelt Memorial	N32°56'19"	W084°41'47"		
1.Point	Sebastin	Sebastian Cove	N33°27'15"	W083°16'40"	89.5mi	66°
2.Point	Ashburn	Ashburn	N31°41'09"	W083°37'56"	123.6mi	190°
3.Point	WHEAT	Wheat	N32°54'54"	W084°50'07"	110.1mi	321°
Finish	01Rosevl	01Roosevelt Memorial	N32°56'19"	W084°41'47"	8.2mi	79°
Landing	01Rosevl	01Roosevelt Memorial	N32°56'19"	W084°41'47"		

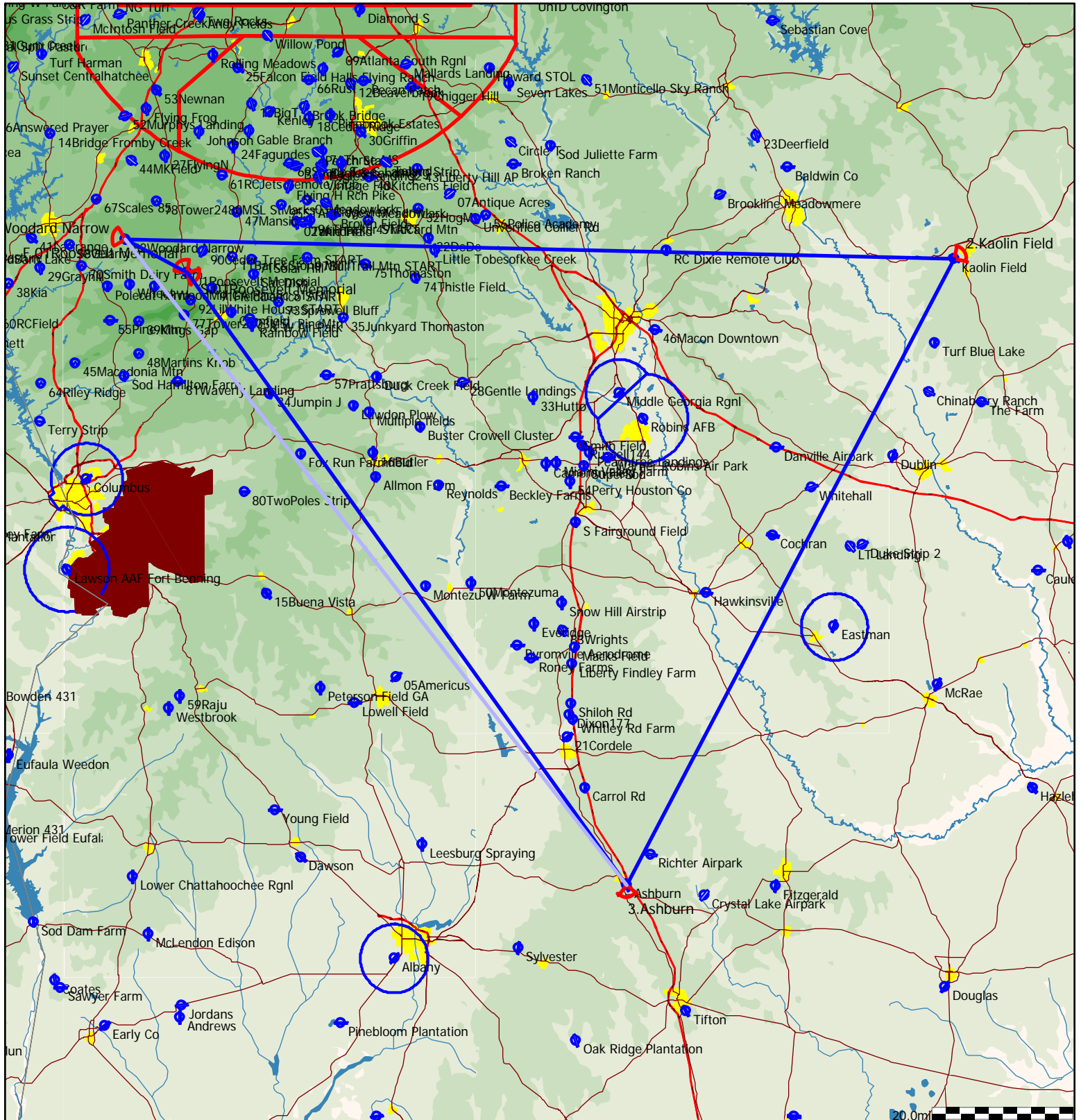


Type: FAI Triangle, Start on leg - (534.0km) [535.4pts]

Task distance: 332.7mi

Alternate remote start at Cedar Tree is more efficient if speed is a concern

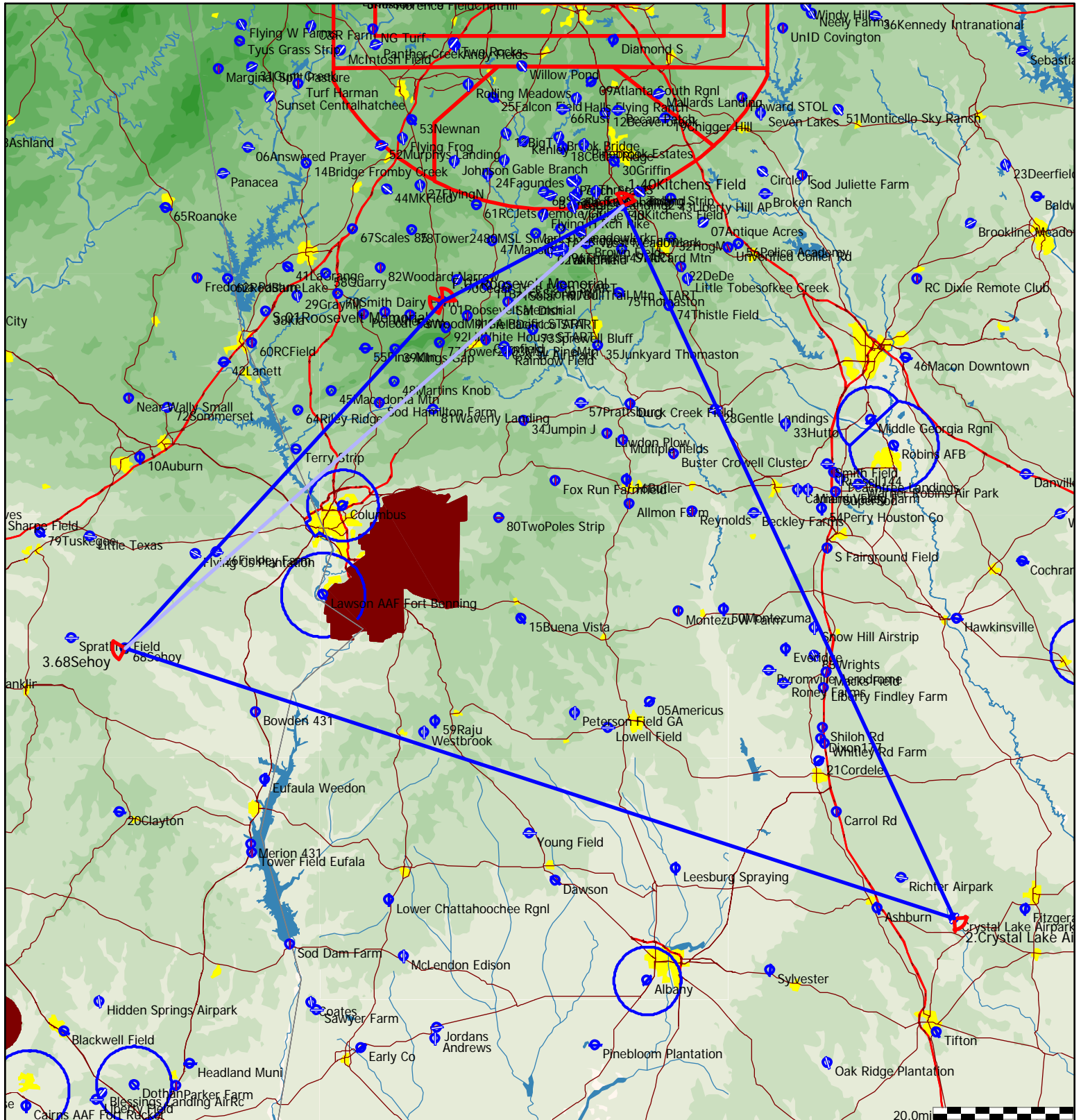
Style	Code	Points	Latitude	Longitude	Dis.	Crs.
Take off	01Rosevl	01Roosevelt Memorial	N32°56'19"	W084°41'47"		
Start	01Rosevl	01Roosevelt Memorial	N32°56'19"	W084°41'47"		
1.Point	82WodNar	82Woodard Narrow	N33°00'24"	W084°50'45"	9.9mi	298°
2.Point	Kaolin	Kaolin Field	N32°58'00"	W082°50'17"	116.6mi	91°
3.Point	Ashburn	Ashburn	N31°41'09"	W083°37'56"	99.7mi	208°
Finish	01Rosevl	01Roosevelt Memorial	N32°56'19"	W084°41'47"	106.4mi	324°
Landing	01Rosevl	01Roosevelt Memorial	N32°56'19"	W084°41'47"		



Type: FAI Triangle, Start on leg - (534.0km) [535.9pts]

Task distance: 333.0mi

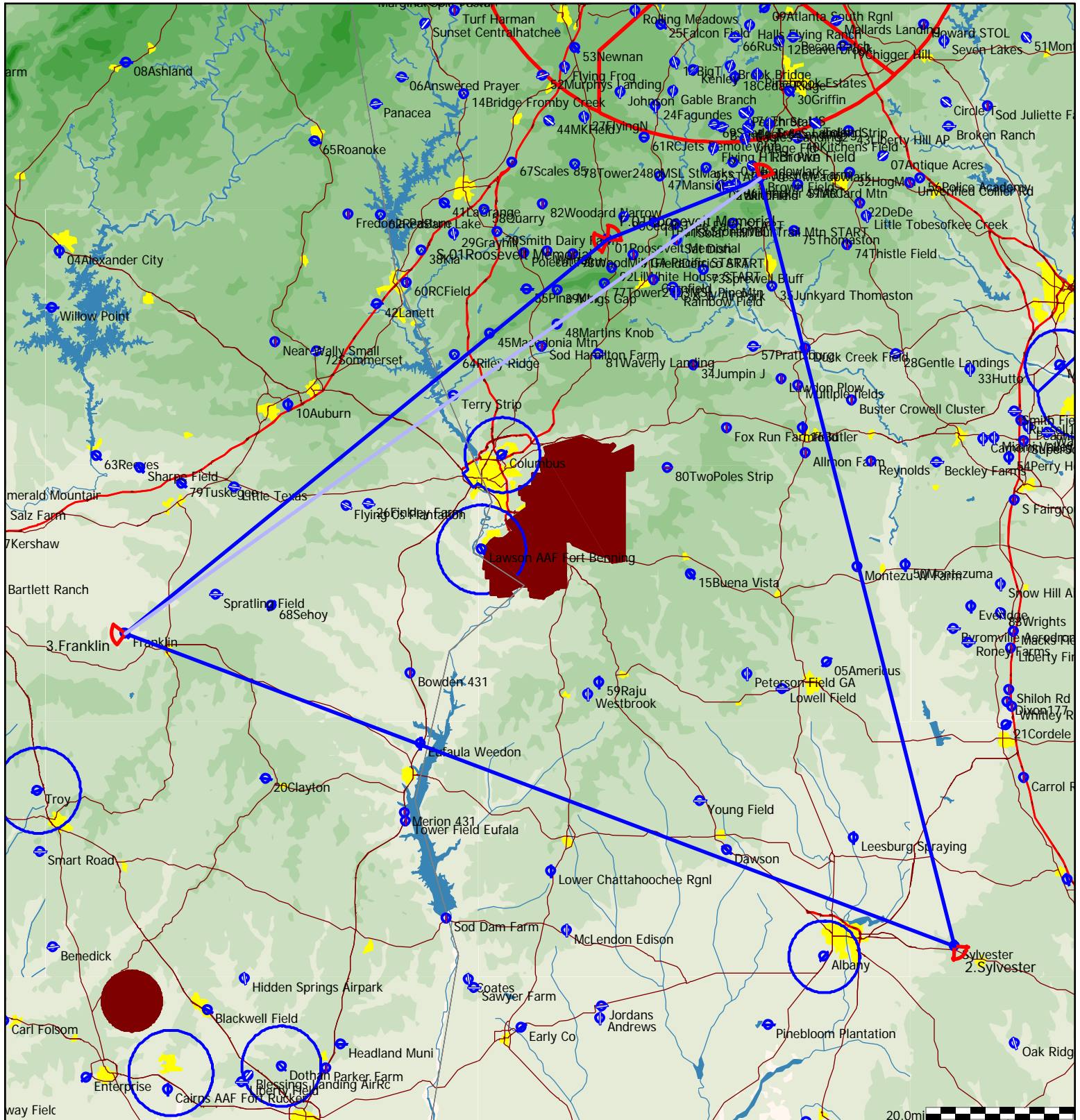
Style	Code	Points	Latitude	Longitude	Dis.	Crs.
Take off	01Rosevl	01Roosevelt Memorial	N32°56'19"	W084°41'47"		
Start	01Rosevl	01Roosevelt Memorial	N32°56'19"	W084°41'47"		
1.Point	40Kitchn	40Kitchens Field	N33°08'04"	W084°15'15"	29.0mi	62°
2.Point	CrystLk	Crystal Lake Airpark	N31°39'51"	W083°26'38"	111.8mi	155°
3.Point	68Sehoy	68Sehoy	N32°13'17"	W085°28'18"	125.2mi	288°
Finish	01Rosevl	01Roosevelt Memorial	N32°56'19"	W084°41'47"	67.0mi	42°
Landing	01Rosevl	01Roosevelt Memorial	N32°56'19"	W084°41'47"		



Type: FAI Triangle, Start on leg - (534.6km) [535.9pts]

Task distance: 333.0mi

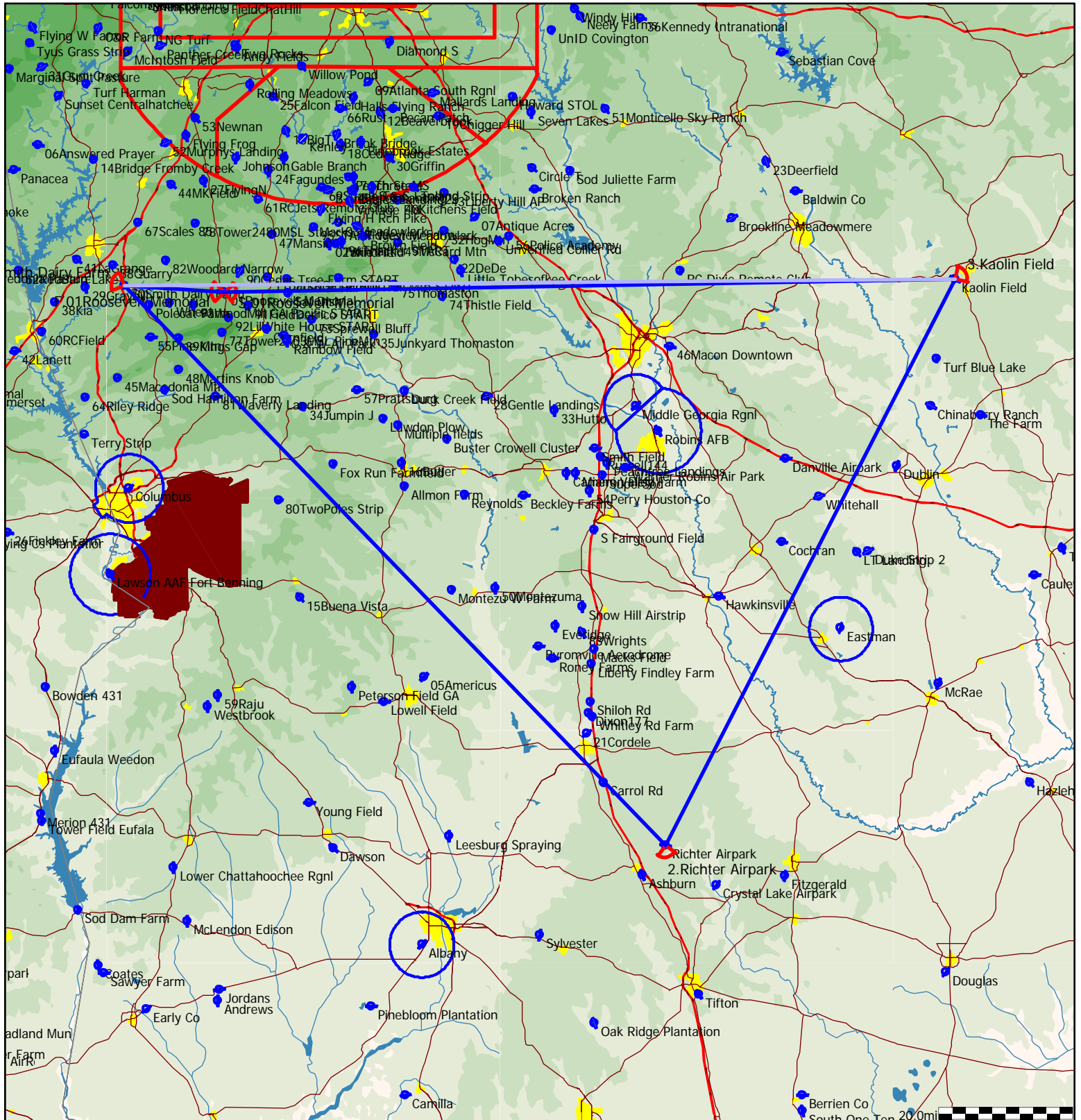
Style	Code	Points	Latitude	Longitude	Dis.	Crs.
Take off	01Rosevl	01Roosevelt Memorial	N32°56'19"	W084°41'47"		
Start	01Rosevl	01Roosevelt Memorial	N32°56'19"	W084°41'47"		
1.Point	Brown	Brown Field	N33°03'25"	W084°20'33"	22.1mi	68°
2.Point	Sylvestr	Sylvester	N31°33'23"	W083°53'39"	106.7mi	166°
3.Point	Franklin	Franklin	N32°10'01"	W085°48'35"	120.2mi	291°
Finish	01Rosevl	01Roosevelt Memorial	N32°56'19"	W084°41'47"	84.0mi	50°
Landing	01Rosevl	01Roosevelt Memorial	N32°56'19"	W084°41'47"		



Type: FAI Triangle, Start on leg - (535.4km) [535.5pts]

Task distance: 332.8mi

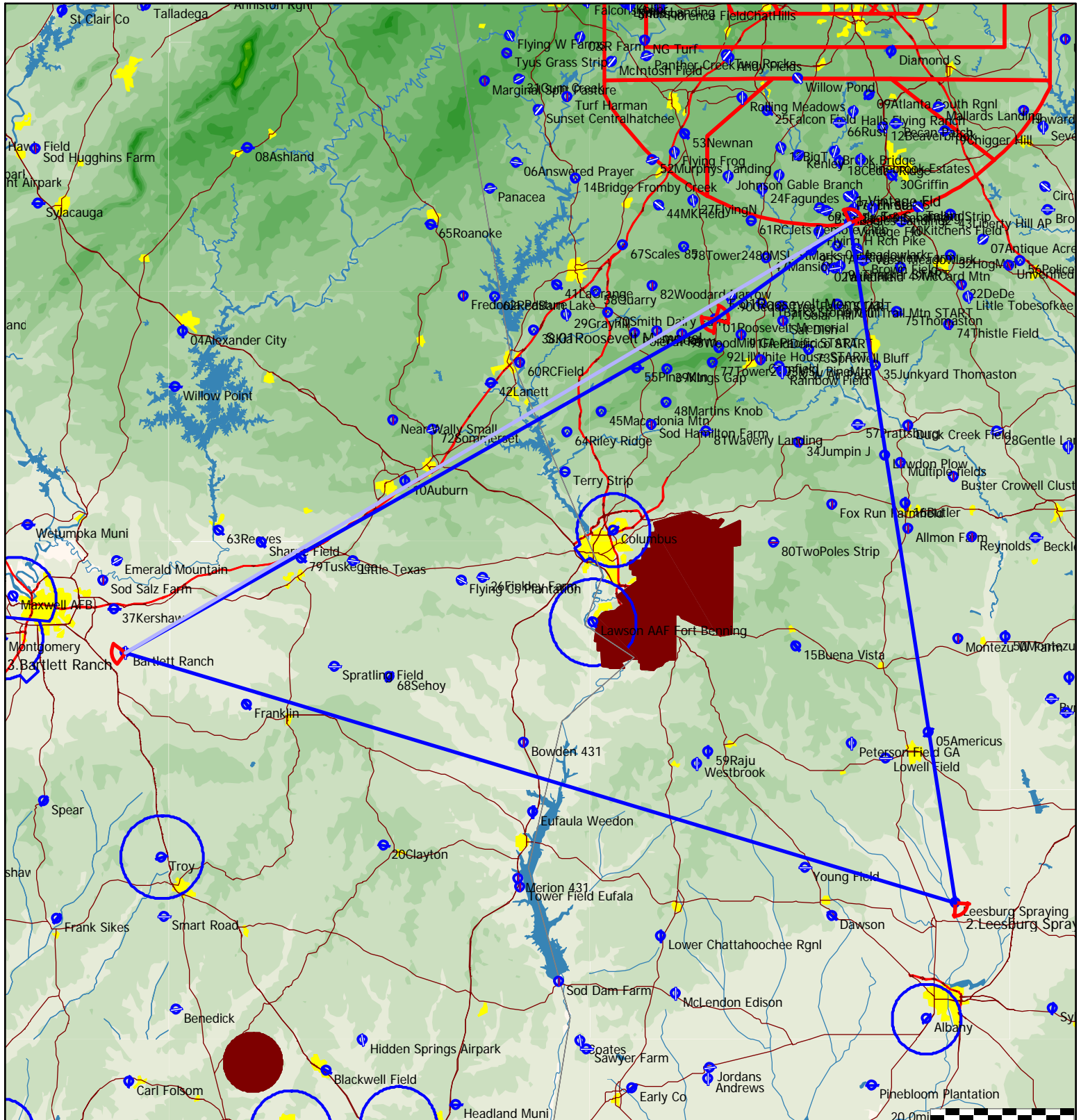
Style	Code	Points	Latitude	Longitude	Dis.	Crs.
Take off	01Rosevl	01Roosevelt Memorial	N32°56'19"	W084°41'47"		
Start	01Rosevl	01Roosevelt Memorial	N32°56'19"	W084°41'47"		
1.Point	70SmithD	70Smith Dairy Farm	N32°57'10"	W084°57'03"	14.8mi	274°
2.Point	Richter	Richter Airpark	N31°44'55"	W083°34'25"	115.6mi	135°
3.Point	Kaolin	Kaolin Field	N32°58'00"	W082°50'17"	94.3mi	27°
Finish	01Rosevl	01Roosevelt Memorial	N32°56'19"	W084°41'47"	108.0mi	269°
Landing	01Rosevl	01Roosevelt Memorial	N32°56'19"	W084°41'47"		



Type: FAI Triangle, Start on leg - (535.5km) [535.7pts]

Task distance: 332.9mi

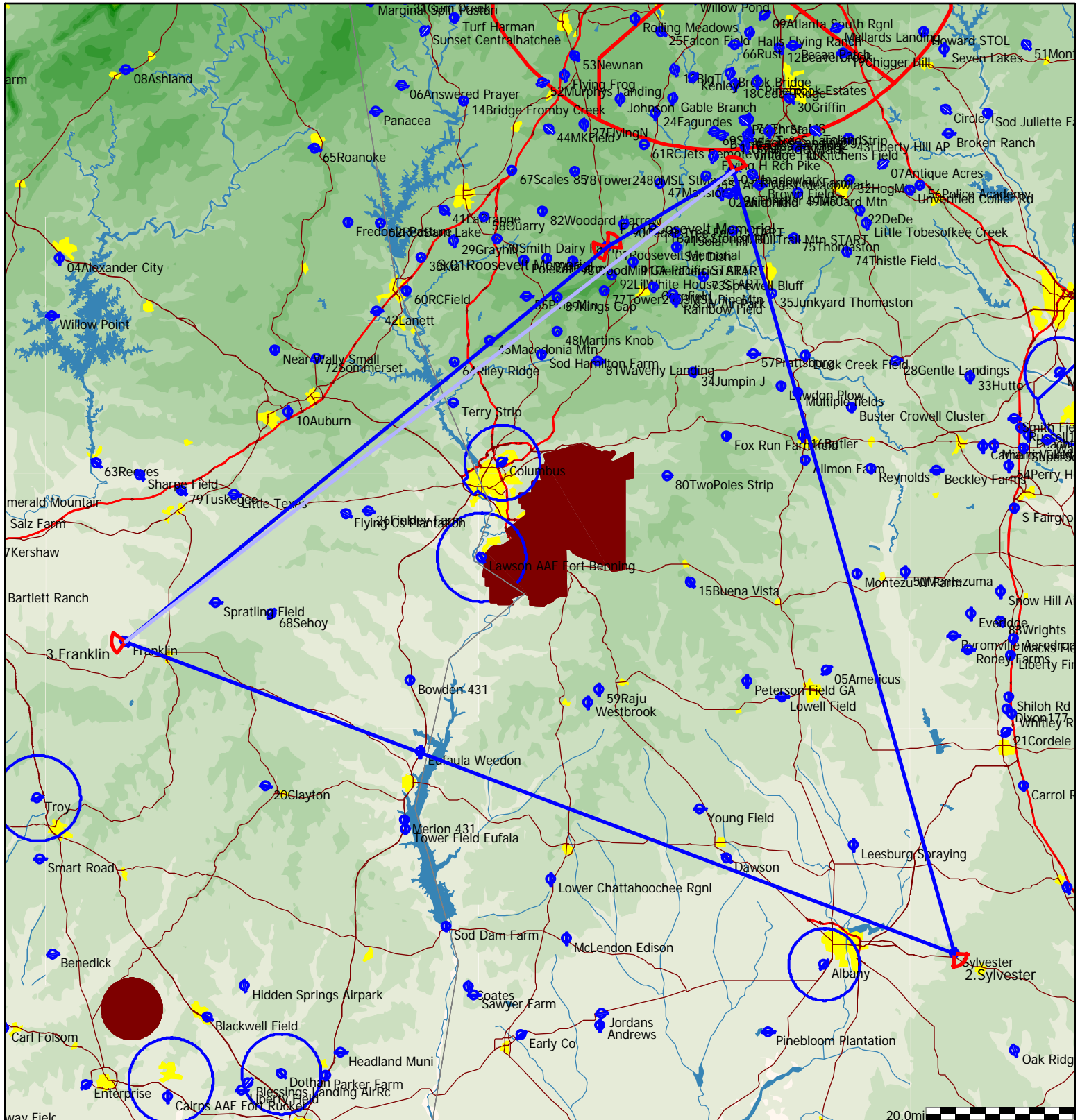
Style	Code	Points	Latitude	Longitude	Dis.	Crs.
Take off	01Rosevl	01Roosevelt Memorial	N32°56'19"	W084°41'47"		
Start	01Rosevl	01Roosevelt Memorial	N32°56'19"	W084°41'47"		
1.Point	Vintage	Vintage Fld	N33°08'00"	W084°22'39"	22.9mi	54°
2.Point	Leesburg	Leesburg Spraying	N31°46'05"	W084°07'32"	95.2mi	171°
3.Point	Bartlett	Bartlett Ranch	N32°16'11"	W086°05'56"	120.9mi	287°
Finish	01Rosevl	01Roosevelt Memorial	N32°56'19"	W084°41'47"	93.9mi	60°
Landing	01Rosevl	01Roosevelt Memorial	N32°56'19"	W084°41'47"		



Type: FAI Triangle, Start on leg - (536.6km) [536.9pts]

Task distance: 333.6mi

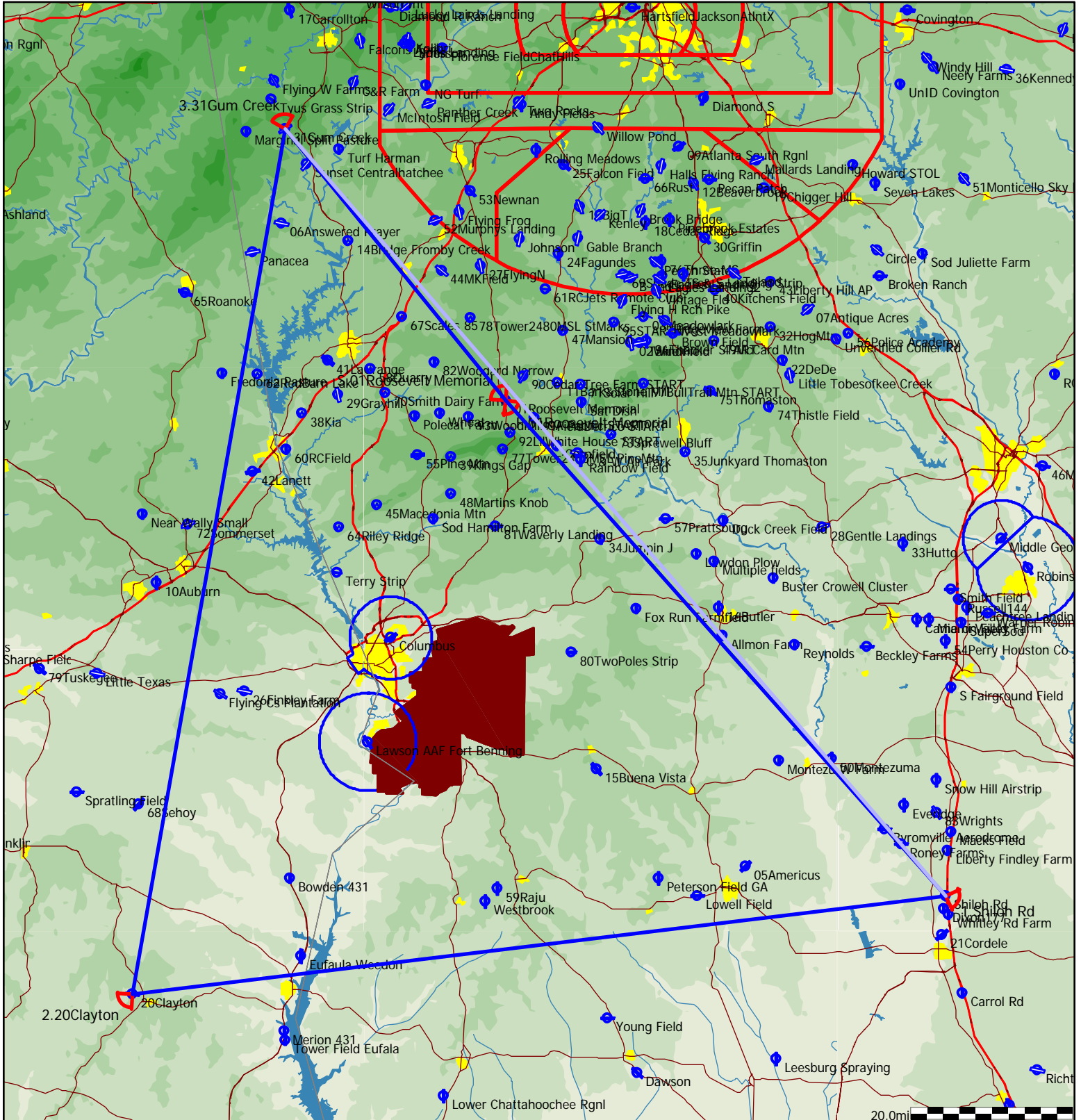
Style	Code	Points	Latitude	Longitude	Dis.	Crs.
Take off	01Rosevl	01Roosevelt Memorial	N32°56'19"	W084°41'47"		
Start	01Rosevl	01Roosevelt Memorial	N32°56'19"	W084°41'47"		
1.Point	03Meadol	03Meadowlark	N33°05'14"	W084°24'19"	19.8mi	59°
2.Point	Sylvestr	Sylvester	N31°33'23"	W083°53'39"	109.6mi	164°
3.Point	Franklin	Franklin	N32°10'01"	W085°48'35"	120.2mi	291°
Finish	01Rosevl	01Roosevelt Memorial	N32°56'19"	W084°41'47"	84.0mi	50°
Landing	01Rosevl	01Roosevelt Memorial	N32°56'19"	W084°41'47"		



Type: FAI Triangle, Start on leg - (536.9km) [536.9pts]

Task distance: 333.6mi

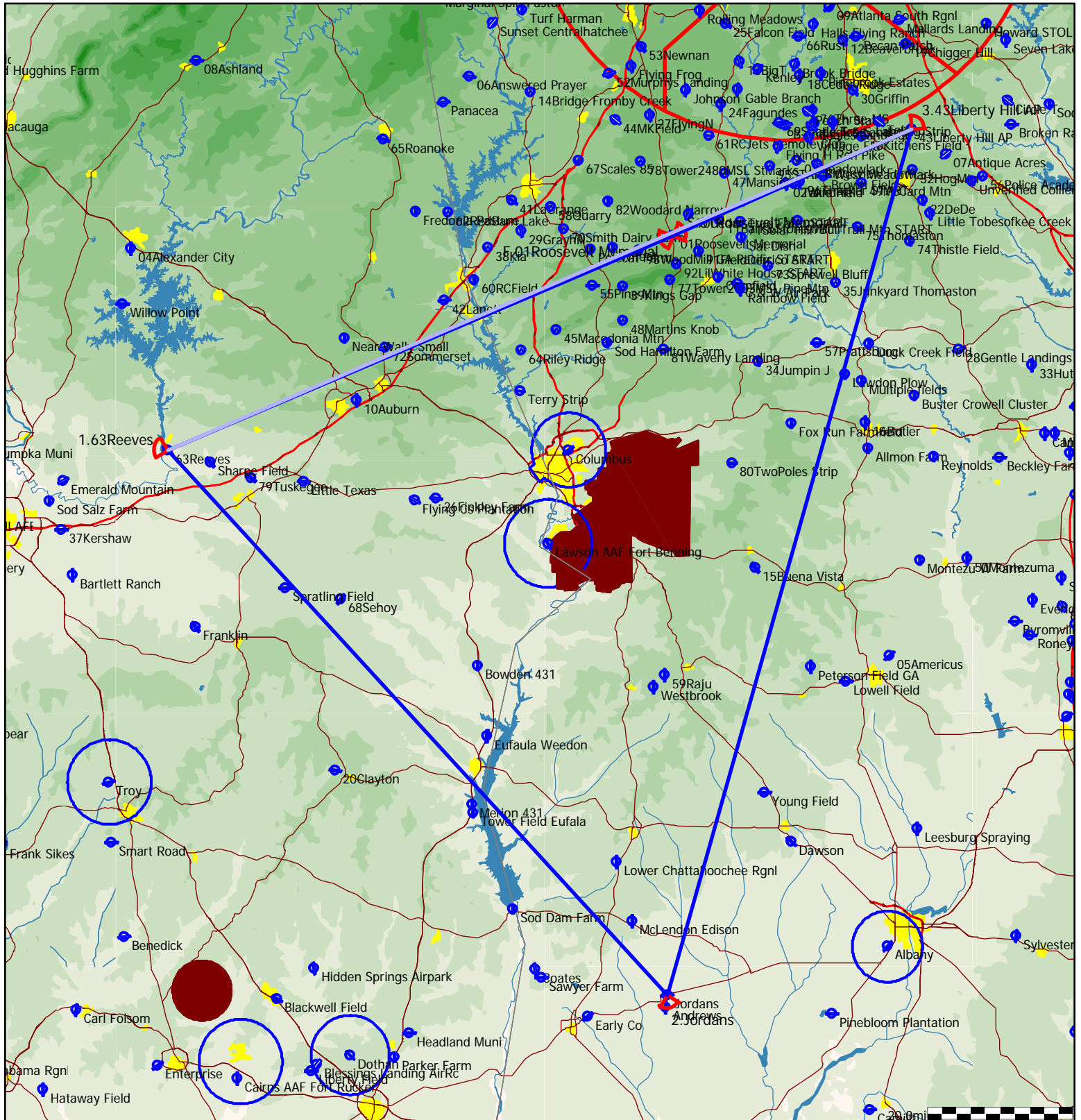
Style	Code	Points	Latitude	Longitude	Dis.	Crs.
Take off	01Rosevl	01Roosevelt Memorial	N32°56'19"	W084°41'47"		
Start	01Rosevl	01Roosevelt Memorial	N32°56'19"	W084°41'47"		
1.Point	SHILOHRd	Shiloh Rd	N32°03'25"	W083°45'58"	81.5mi	138°
2.Point	20Claytn	20Clayton	N31°53'00"	W085°29'07"	101.7mi	264°
3.Point	31GumCrk	31Gum Creek	N33°25'16"	W085°09'43"	107.6mi	10°
Finish	01Rosevl	01Roosevelt Memorial	N32°56'19"	W084°41'47"	42.8mi	141°
Landing	01Rosevl	01Roosevelt Memorial	N32°56'19"	W084°41'47"		



Type: FAI Triangle, Start on leg - (537.2km) [537.2pts]

Task distance: 333.8mi

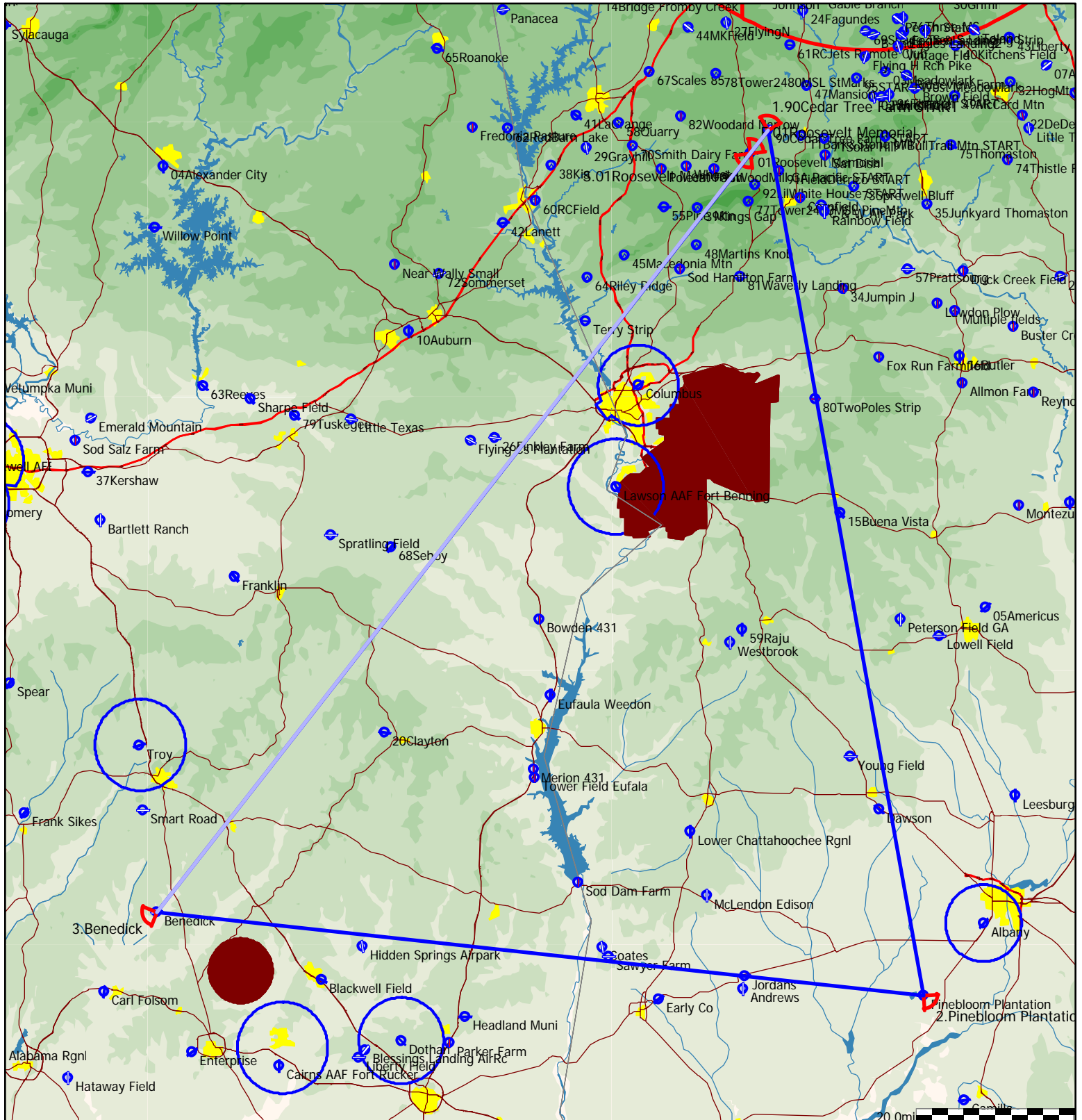
Style	Code	Points	Latitude	Longitude	Dis.	Crs.
Take off	01Rosevl	01Roosevelt Memorial	N32°56'19"	W084°41'47"		
Start	01Rosevl	01Roosevelt Memorial	N32°56'19"	W084°41'47"		
1.Point	62Reves	63Reeves	N32°30'54"	W085°52'34"	74.7mi	247°
2.Point	Jordans	Jordans	N31°26'19"	W084°42'30"	101.0mi	137°
3.Point	43LibrtH	43Liberty Hill AP	N33°09'01"	W084°08'15"	122.6mi	16°
Finish	01Rosevl	01Roosevelt Memorial	N32°56'19"	W084°41'47"	35.6mi	246°
Landing	01Rosevl	01Roosevelt Memorial	N32°56'19"	W084°41'47"		



Type: FAI Triangle, Start on leg - (537.2km) [537.2pts]

Task distance: 333.8mi

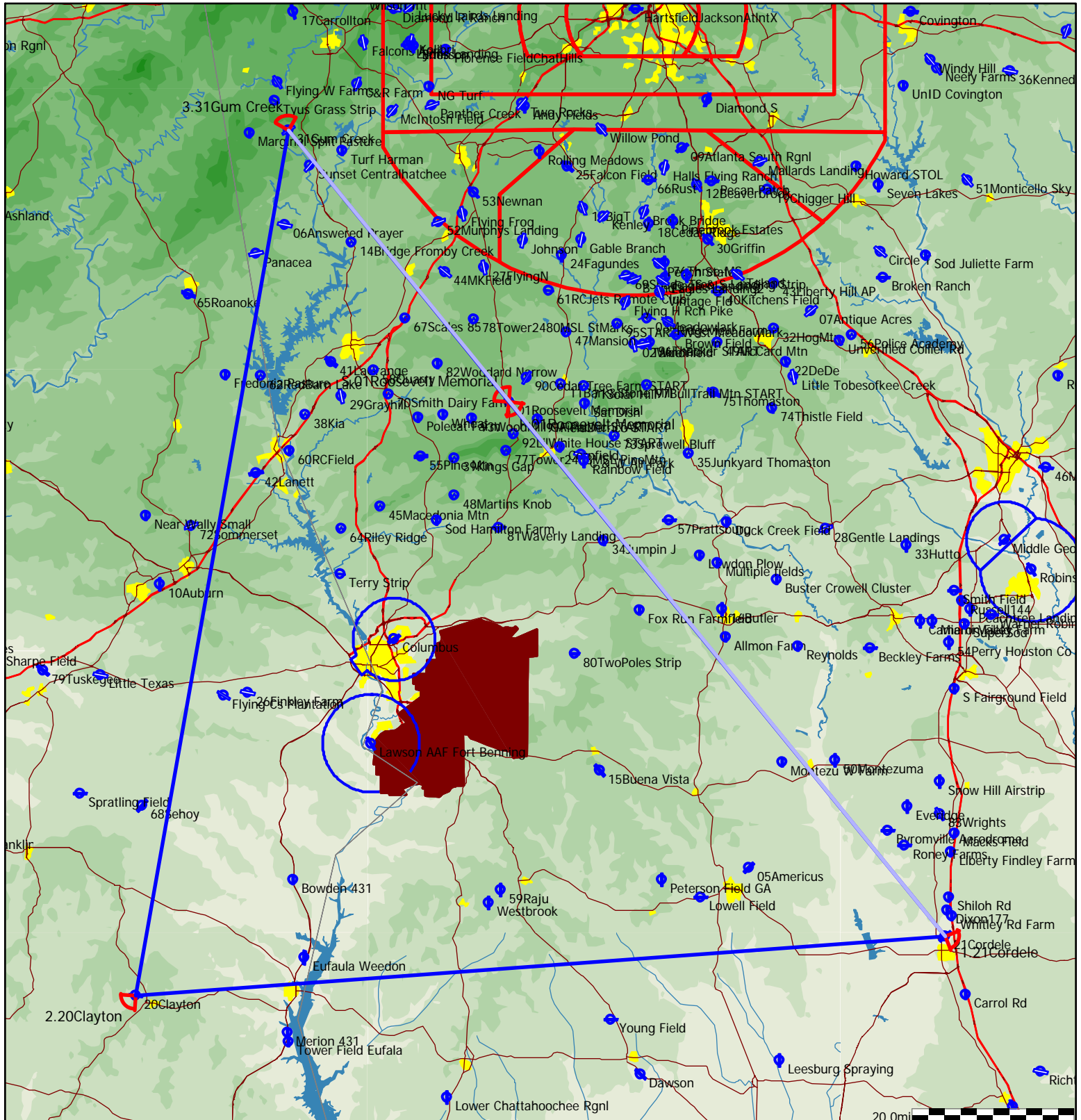
Style	Code	Points	Latitude	Longitude	Dis.	Crs.
Take off	01Rosevl	01Roosevelt Memorial	N32°56'19"	W084°41'47"		
Start	01Rosevl	01Roosevelt Memorial	N32°56'19"	W084°41'47"		
1.Point	90CedrST	90Cedar Tree Farm START	N32°58'54"	W084°39'29"	3.7mi	37°
2.Point	Pineblom	Pinebloom Plantation	N31°24'11"	W084°19'22"	110.5mi	170°
3.Point	Benedick	Benedick	N31°33'18"	W085°58'38"	98.2mi	277°
Finish	01Rosevl	01Roosevelt Memorial	N32°56'19"	W084°41'47"	121.3mi	38°
Landing	01Rosevl	01Roosevelt Memorial	N32°56'19"	W084°41'47"		



Type: FAI Triangle, Start on leg - (540.8km) [540.8pts]

Task distance: 336.0mi

Style	Code	Points	Latitude	Longitude	Dis.	Crs.
Take off	01Rosevl	01Roosevelt Memorial	N32°56'19"	W084°41'47"		
Start	01Rosevl	01Roosevelt Memorial	N32°56'19"	W084°41'47"		
1.Point	21Cordel	21Cordele	N31°59'20"	W083°46'26"	84.8mi	140°
2.Point	20Claytn	20Clayton	N31°53'00"	W085°29'07"	100.8mi	266°
3.Point	31GumCrk	31Gum Creek	N33°25'16"	W085°09'43"	107.6mi	10°
Finish	01Rosevl	01Roosevelt Memorial	N32°56'19"	W084°41'47"	42.8mi	141°
Landing	01Rosevl	01Roosevelt Memorial	N32°56'19"	W084°41'47"		



Type: FAI Triangle, Start on leg - (543.4km) [545.8pts]

Task distance: 339.1mi

Style	Code	Points	Latitude	Longitude	Dis.	Crs.
Take off	01Rosevl	01Roosevelt Memorial	N32°56'19"	W084°41'47"		
Start	01Rosevl	01Roosevelt Memorial	N32°56'19"	W084°41'47"		
1.Point	21Cordel	21Cordele	N31°59'20"	W083°46'26"	84.8mi	140°
2.Point	Spratlin	Spratling Field	N32°14'33"	W085°36'04"	108.6mi	280°
3.Point	FalconAe	Falcons Aerie	N33°34'38"	W085°00'11"	98.3mi	21°
Finish	01Rosevl	01Roosevelt Memorial	N32°56'19"	W084°41'47"	47.5mi	158°
Landing	01Rosevl	01Roosevelt Memorial	N32°56'19"	W084°41'47"		

